

User Manual

Model: MINISPARK



Product Component Description

1	Spray hole	4	Fuse	7	Cooling fan
2	Vent	5	Power port	8	Access hole
3	Power switch	6	Feeding hole	9	Vent

Product Parameters

Fountain height	2.5-3.5m	Fountain direction	Up
Interface	AC INPUT	Control mode	Remote
Gross Power	350W 3.6A 110V 350W 1.8A 220V	Heating way	Resistance wire heating
Power box capacity	60g	Housing material	Flame retardant ABS +PC
Fuse	110V/6A, 220V/5A	Size/N.W.	135*135*170mm 1.58kgs

1. Package Contents

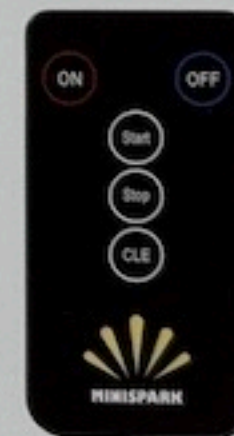
Included in delivery:

- 1 x cold spark machine;
- 1 x power cord;
- 1 x remote controller;
- 1 x user manual.

2. Indicator Description

- HEAT** : Red light When the machine is heating, signal light is on.
- READY** : Green light When the "READY" green light turns from flashing into light on, it indicates that the machine is ready to work.
- SLEEP**: Blue light If there is no operation during the heating or ready state for more than 2 hours, the machine will enter sleep mode.
- FAULT** : Yellow light The light is on with any malfunction.

3. Remote Controller



- ON** : When the green light is flashing, press this button briefly to enter the heating state.
- OFF**: Press to turn off heating.
- Start**: Press to start spraying fireworks. Automatically stops if no operation within 22 seconds.
- Stop**: Press to stop spraying fireworks or stopping material cleaning.
- CLE**: Press to start material cleaning

4. Operation Instruction

When the machine Heated up will enter self-test mode. The blower will run for about 1 second. If the green light flashes, it indicates that the machine is not faulty and is in standby mode. At this point, press the ON button to enter heating mode. The red light will always on display, and the heating will last for about 3 to 5 minutes. The green light will always on display, indicating that the heating is complete and the machine is ready. Press the start button to start spraying sparks upwards, and the spraying will automatically pause for 22 seconds upon completion. You can also stop spraying by pressing the stop button. After using the machine, press the CLE button to clean the materials.

(Please see pages 7-8 for simple steps)

5. Consumables

1) The consumables are classified as:

SMALL: the spark fountain height 2.5-3.5m, and the spot is rarely dropped,use for indoor.

LARGE: It is forbidden to use outdoor powder, which will cause material jamming and poor spraying effect due to temperature.

2) Consumables choice:

Consumables are the customized formula for the test of our machines. Please select our consumables to avoid affecting the effect of the machine; (No warranty service is provided for machines damage caused by consumables not from our company).

3) Consumables save:

Consumables should be kept in a dry and sealed environment to prevent moisture.(wet and sundry consumables should not be used).

4) Consumables add:

Please stop running the machines before add the consumables, to avoid accidental injury.

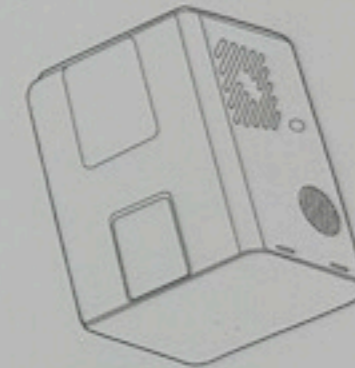
6. Clean and Maintenance

1) Cleaning function: Must do clean Powder after each events used, avoid be stuck by inside powder for next use. The residual power of screw rod can be automatically cleaned by remote controller.

Operation step: Firstly empty the remaining powder in the material box, and then press the clear button until no sparks are ejected.

If you need to save the equipment, please pour out the remaining powder inside for separate storage after cleaning, avoid to affect the next use of the remaining powder affected by moisture.

2) External cleaning: Please wipe the machine gently with soft cotton, to avoid scratch the machine housing.



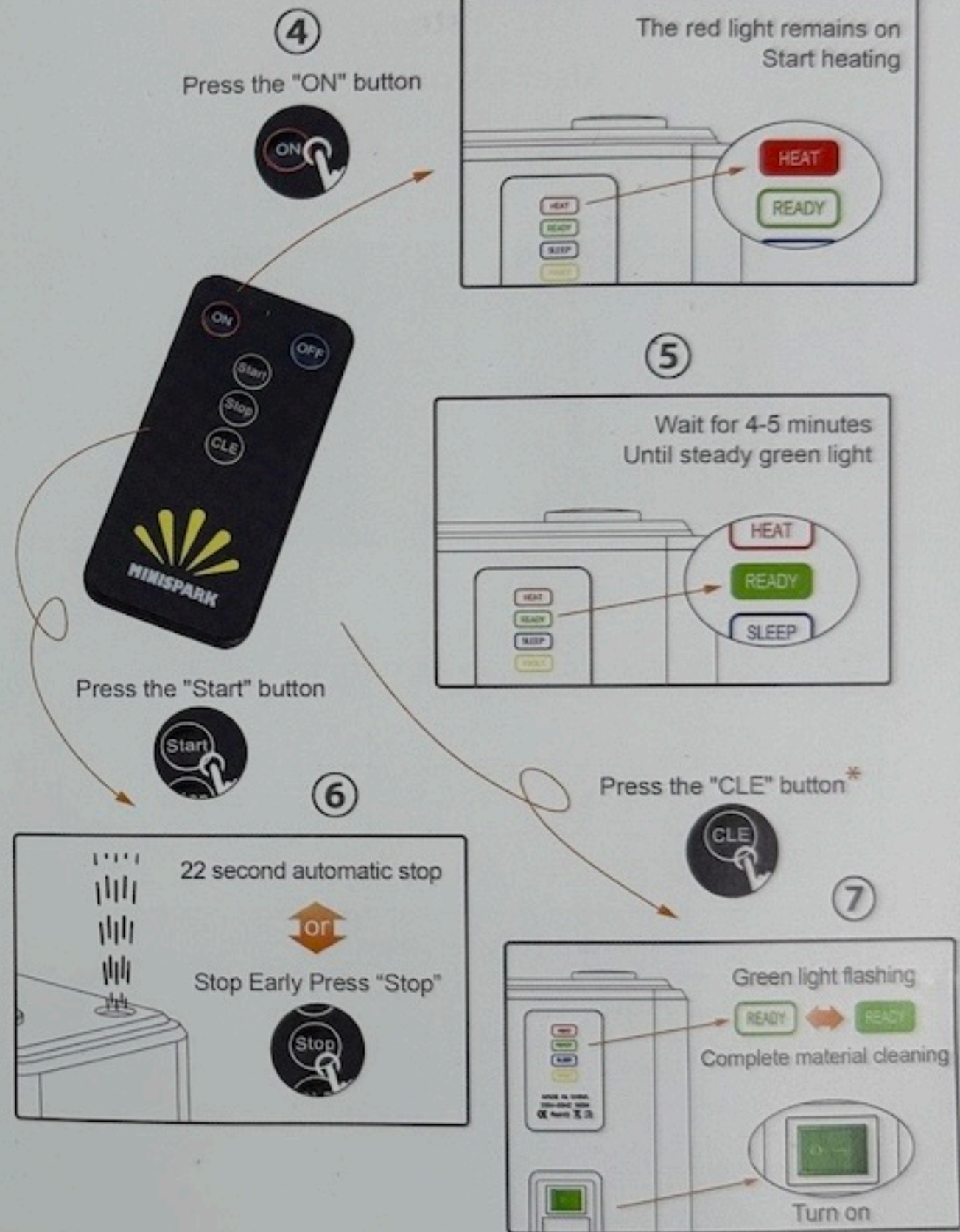
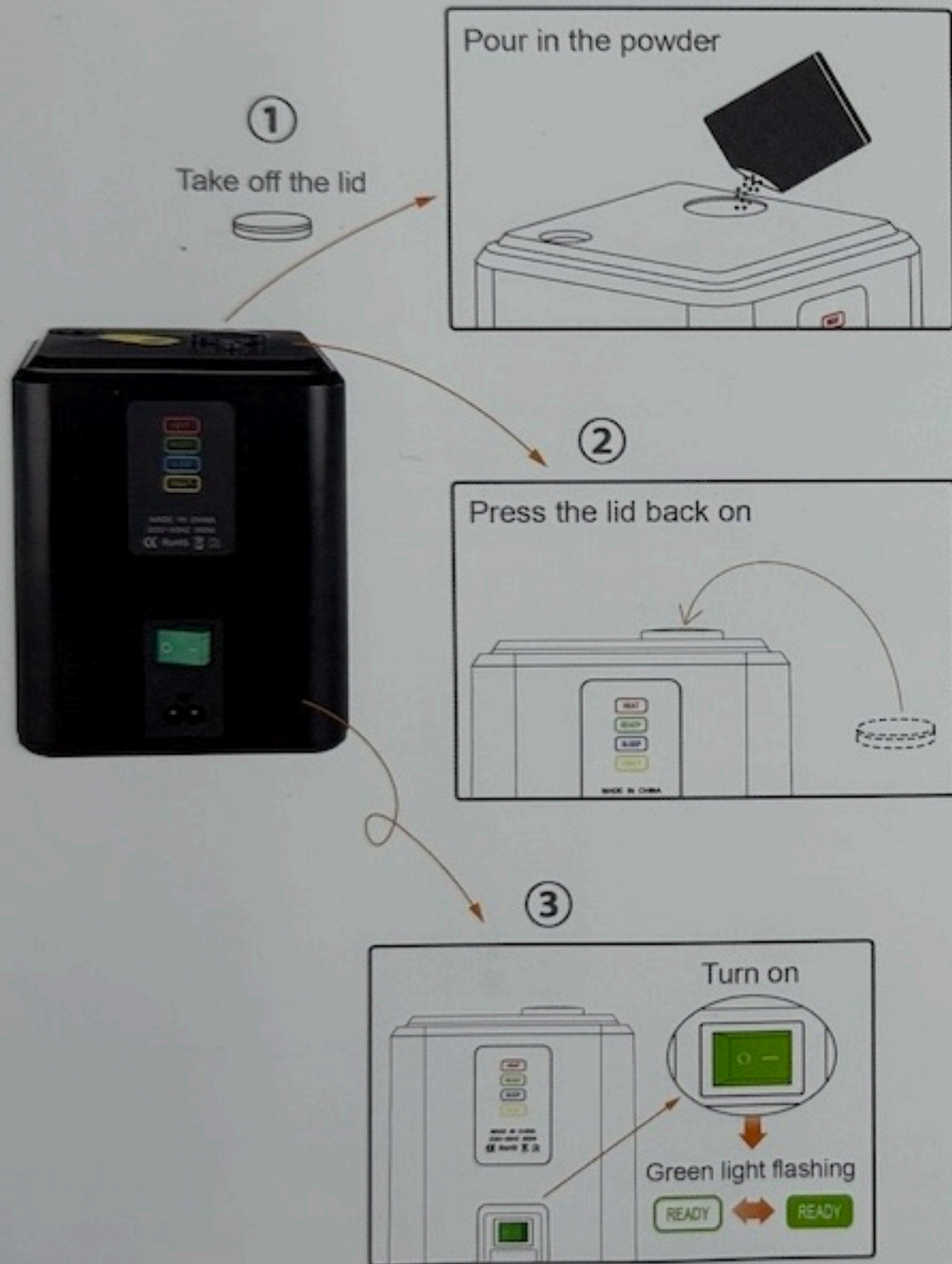
3) Heat dissipation: Clean the residual powder and stop heating before storing the machine,keeping the machine power on with 5 minutes to remove the internal heat by fan.

7. After-sales

1) Warranty: 6 months (Subject to the date of manufacture).

2) Each machine is affixed with the factory code. The factory code shall be provided when enjoying the warranty service. It is invalid if torn.It's may need provide some videos or pictures to confirm the problems.

Usage steps



(* : Press the "CLE" button after usage to make sure no powder remains inside to cause possible damage.)